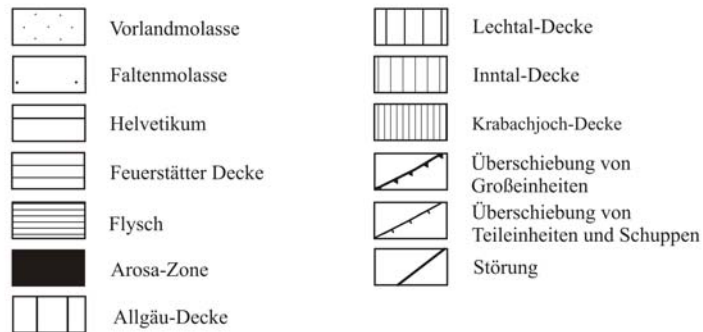
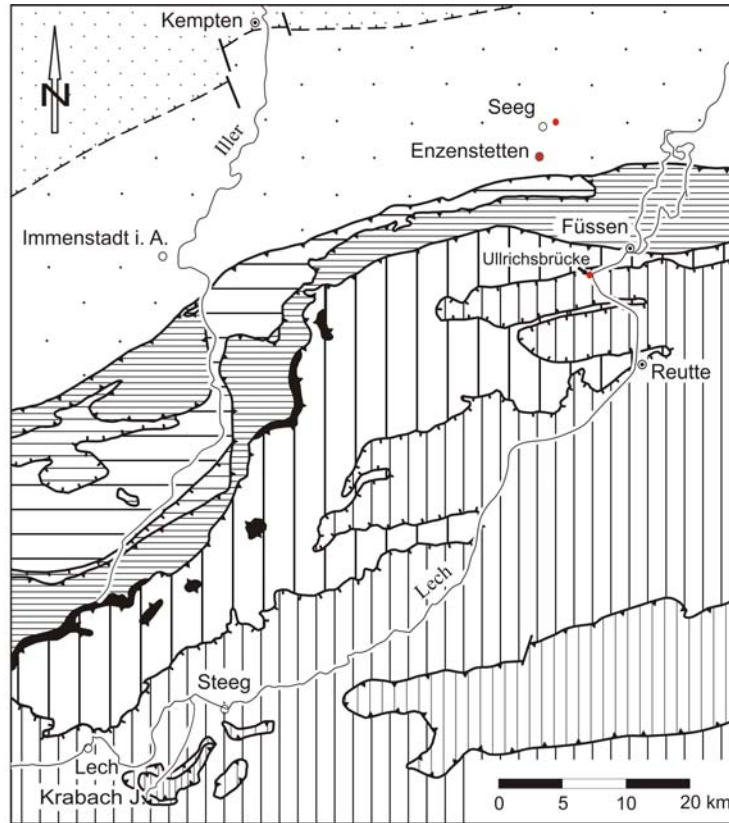
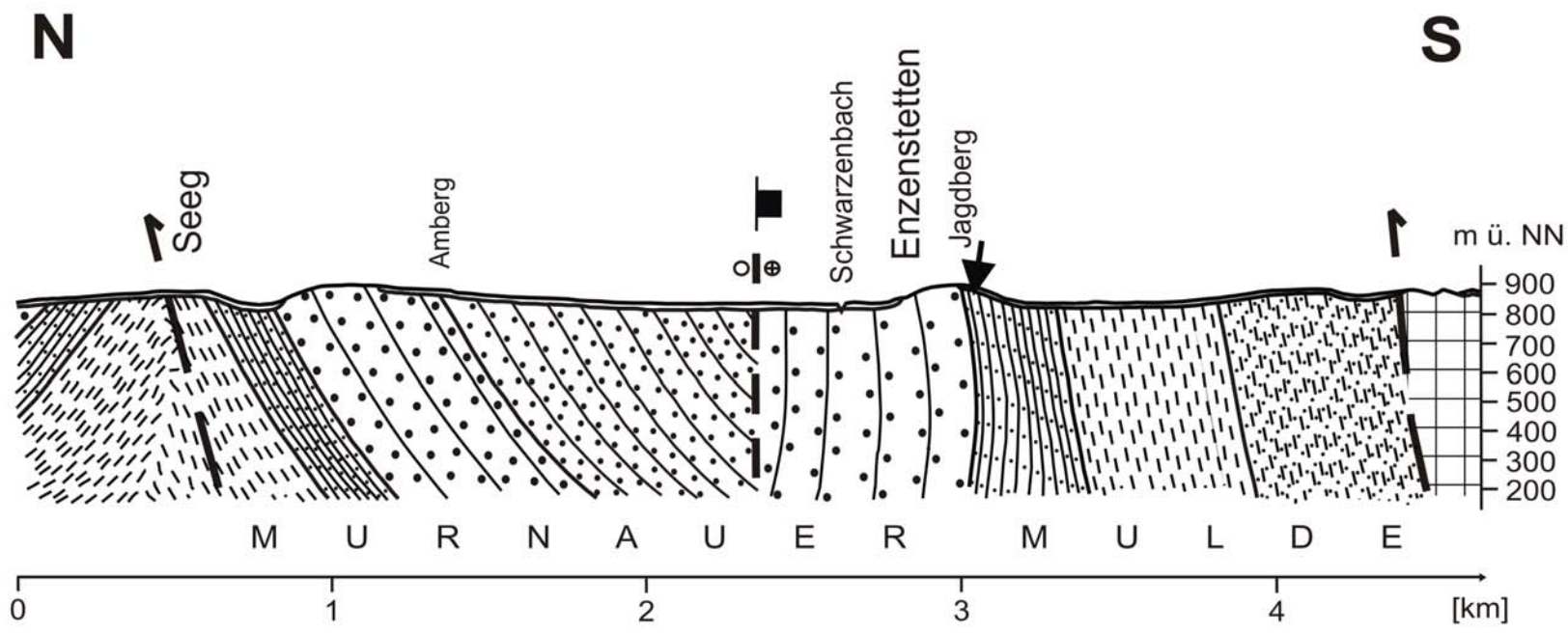


**Untersuchungen an  
„schwarzen Dolomitgeröllen“  
aus der Molasse und aus dem Lech**

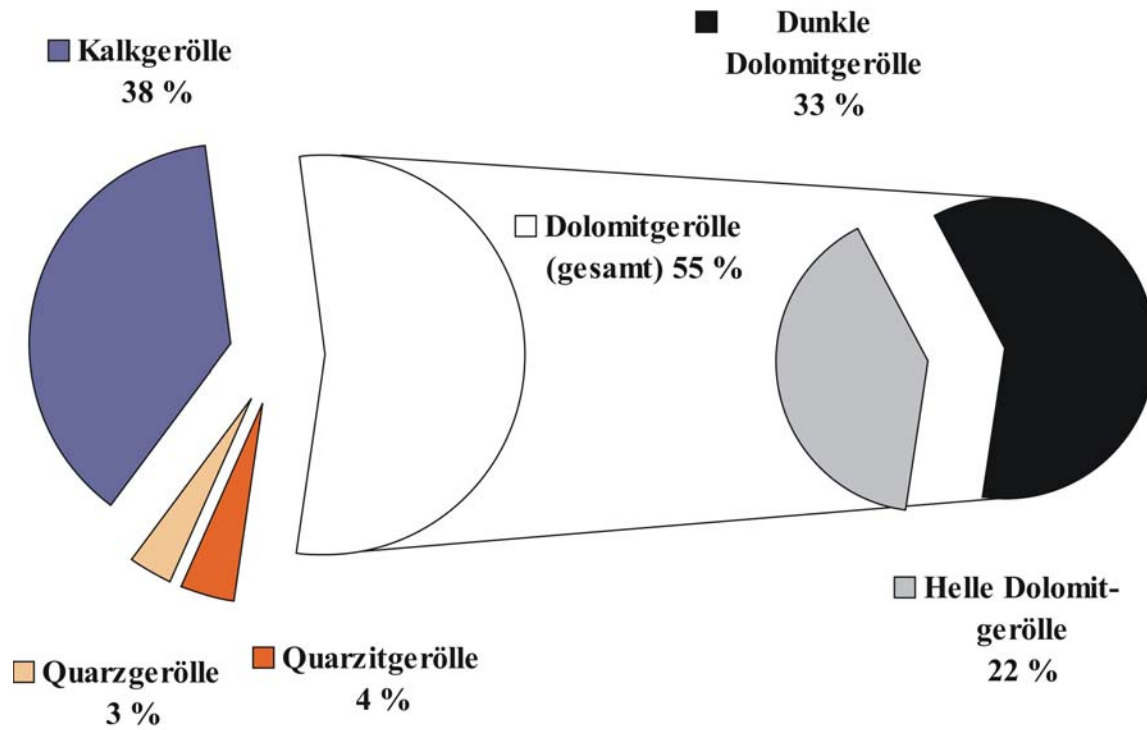
von Moritz Bundschuh

Betreut durch  
Prof. H. Scholz

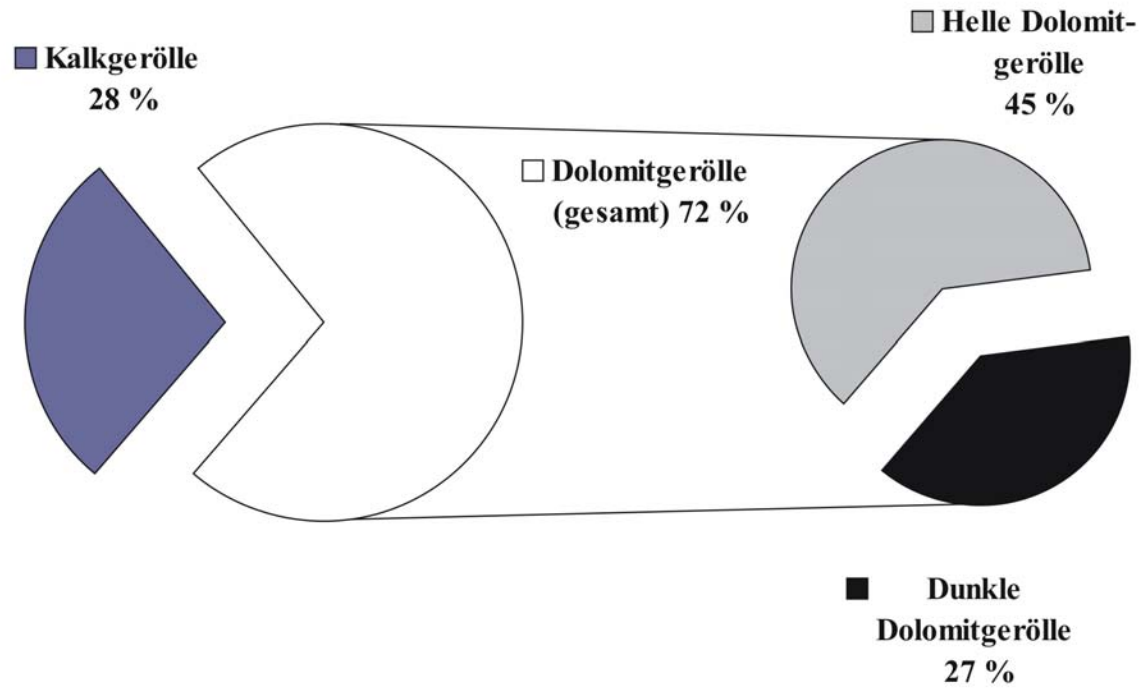




# Geröllspektrum Aufschluss „Enzenstetten“ (Nesselburg-Schüttung)



# Geröllspektrum Aufschluss „Ullrichsbrücke“ (heutiges Lechbett)

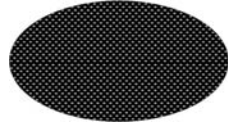


# Gerölltypen

**Makroskopisch**

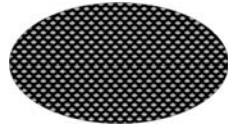
**Wo**

TYP A



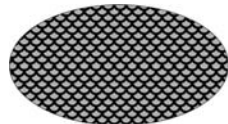
Nesselburgfächer/heutiges Lechbett

TYP B



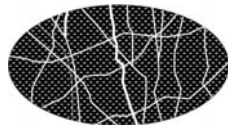
Nesselburgfächer/heutiges Lechbett

TYP C



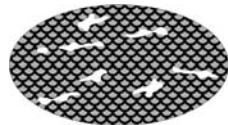
Nesselburgfächer/heutiges Lechbett

TYP D

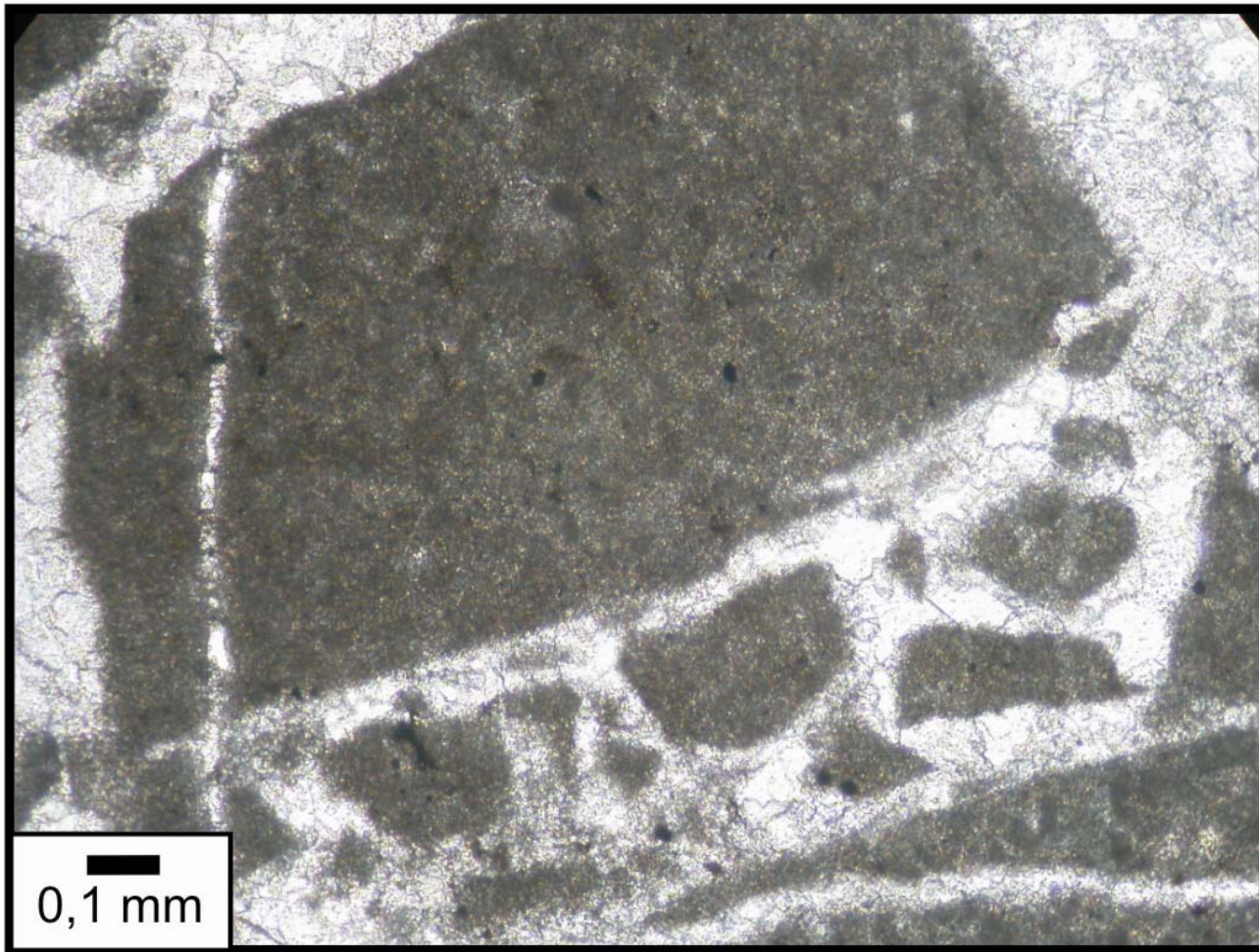


- /heutiges Lechbett

TYP E



- /heutiges Lechbett



brekziiert  
mikritisch  
Pelmiktit

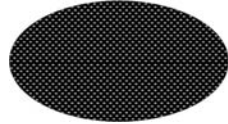
# Gerölltypen

makroskopisch

mikroskopisch

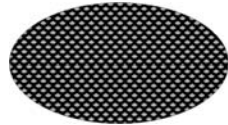
Wo

TYP A



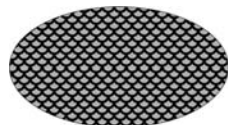
N/L

TYP B



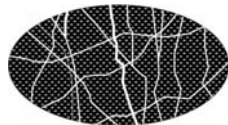
N/L

TYP C



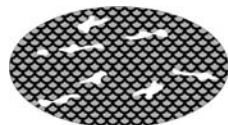
N/L

TYP D

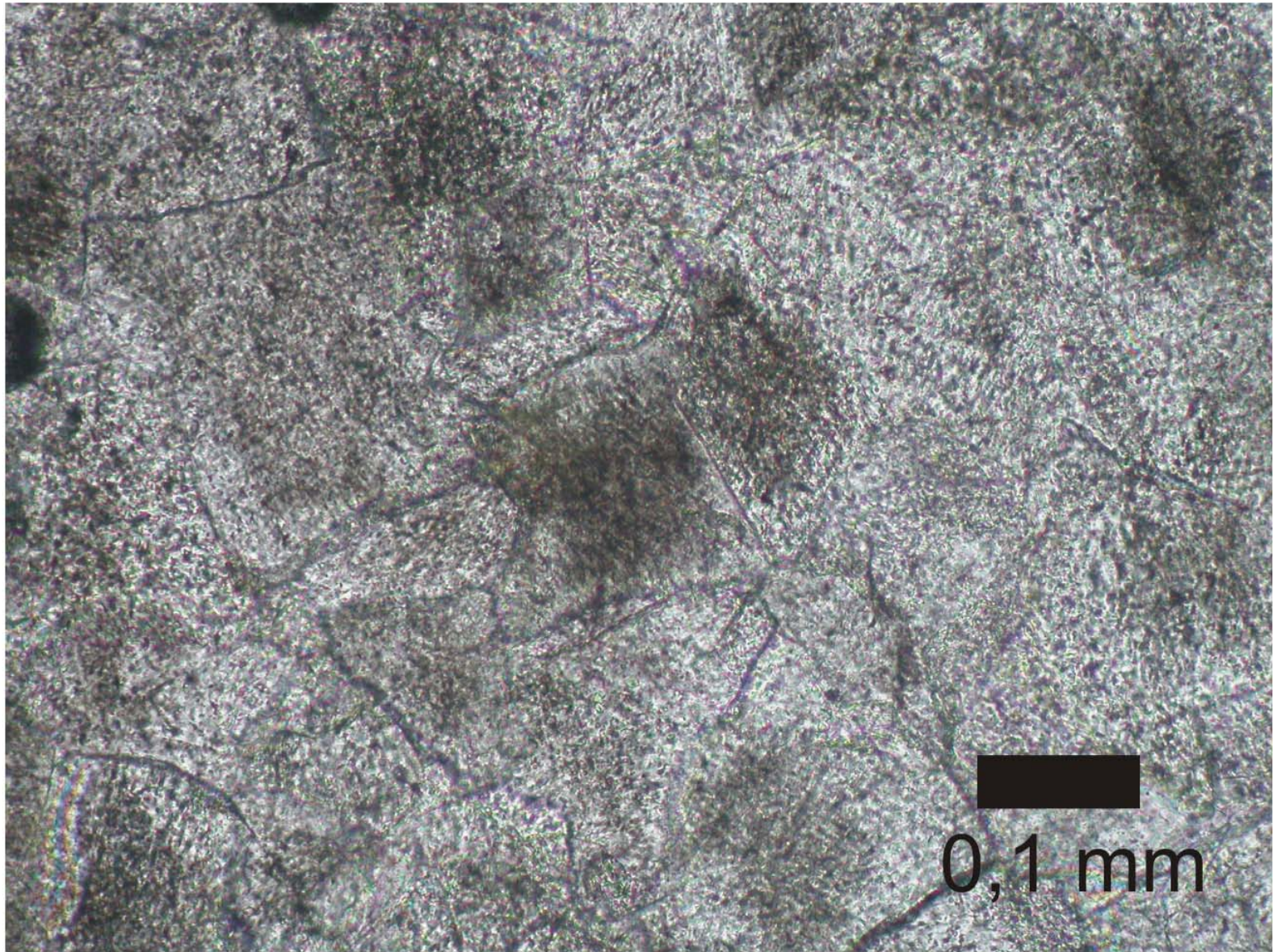


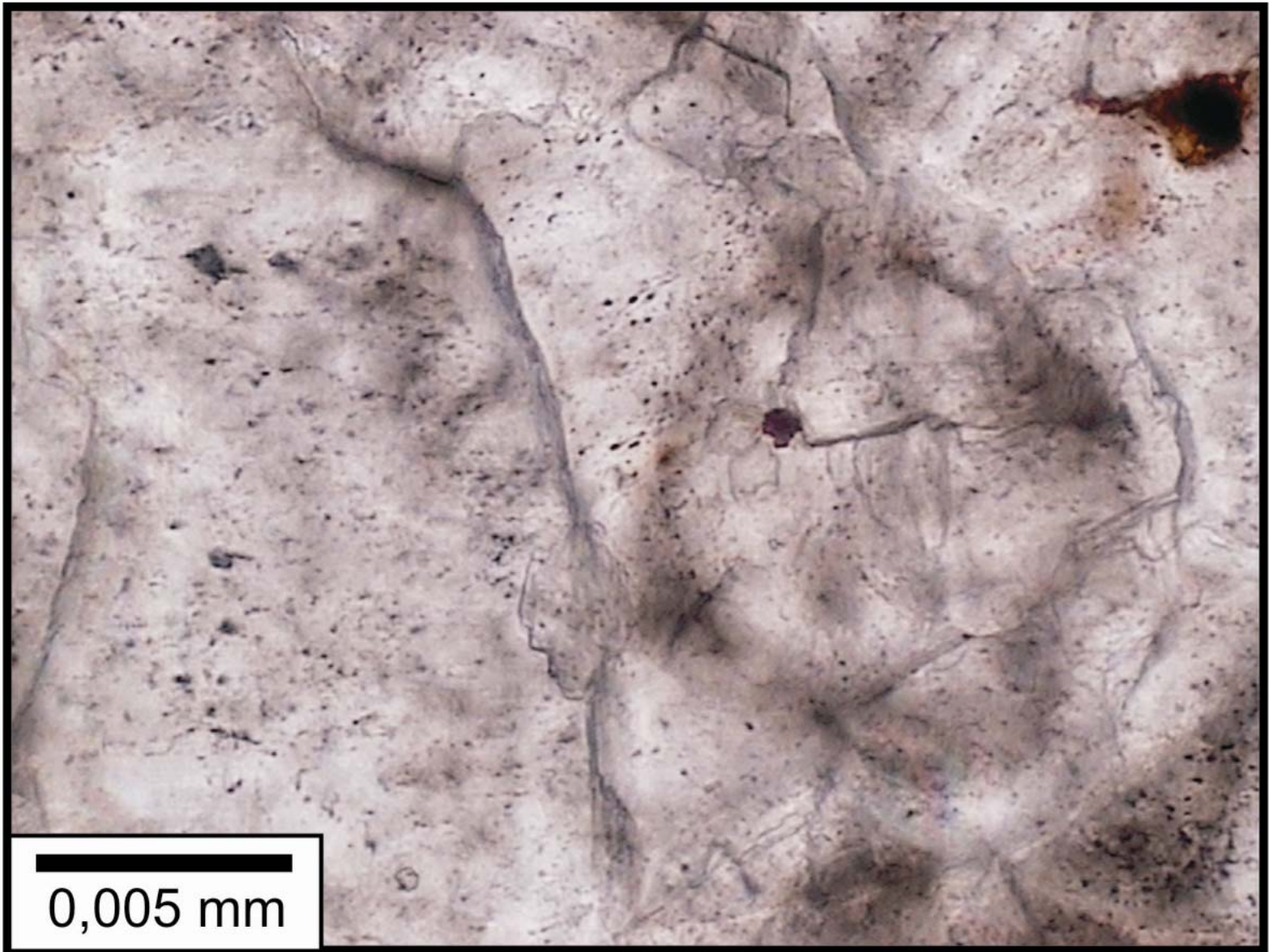
-/L

TYP E



-/L





0,005 mm

